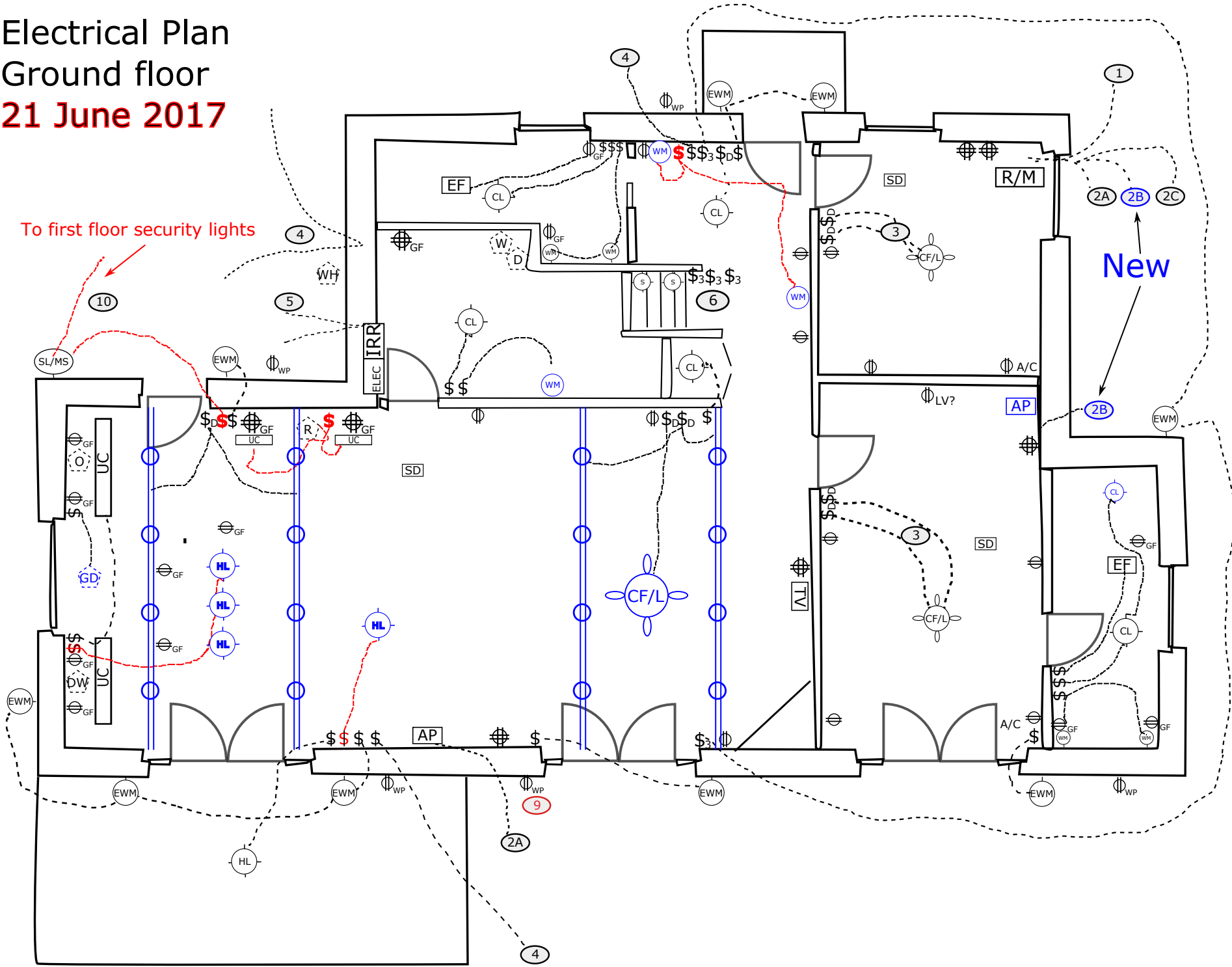
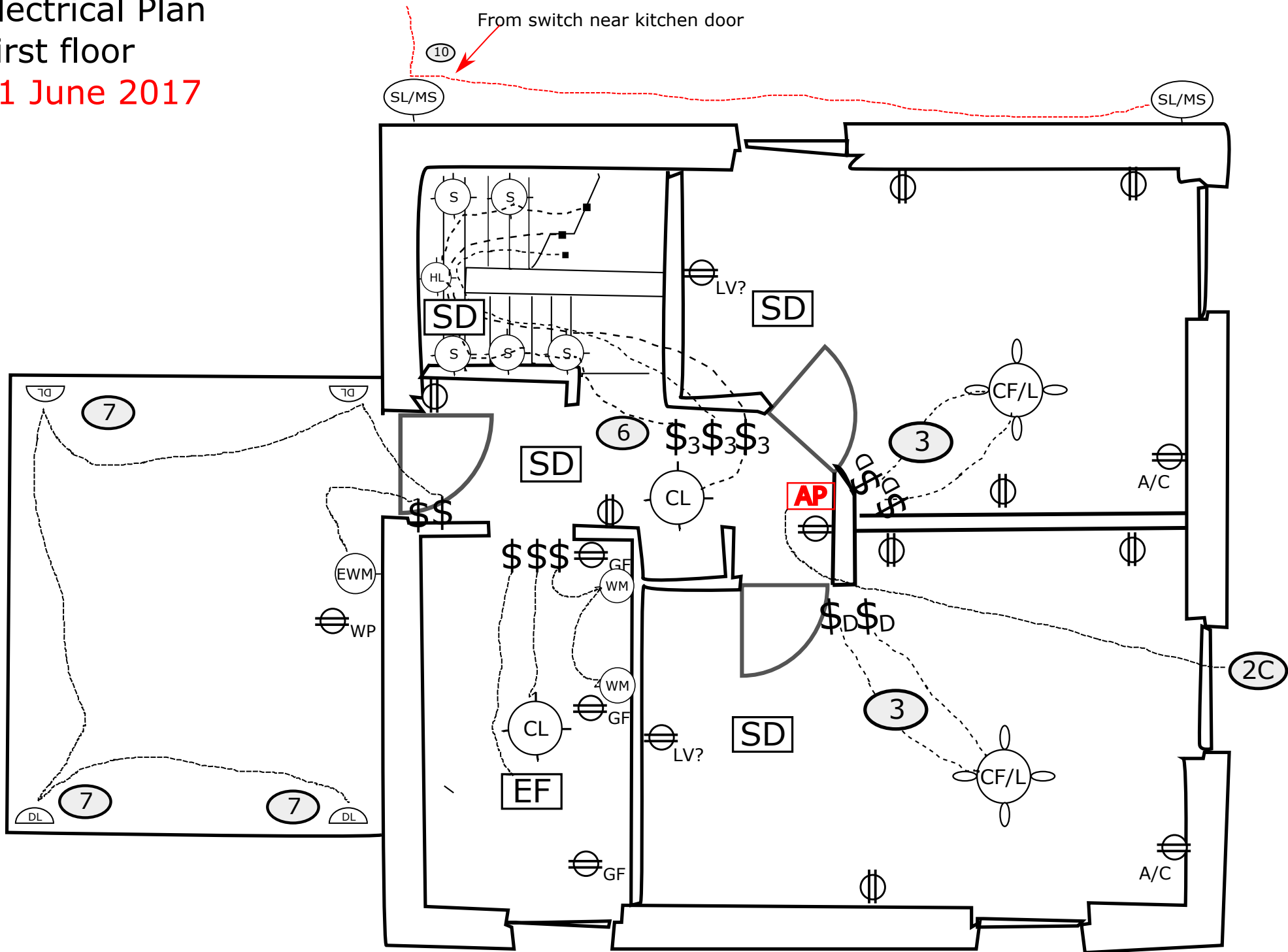


Electrical Plan  
Ground floor  
21 June 2017

To first floor security lights



Electrical Plan  
First floor  
21 June 2017



# Symbols

1 June 16

## Switches

Interruttori

- \$ Regular switch  
Interruttori
- \$<sub>3</sub> 3-way switch  
Interruttori che controlla piu' di un punto luce
- \$<sub>D</sub> Dimmer switch  
Interruttori DIMMER
- Connection to switch

## Outlets

Prese

- ⊖ Regular double  
Presa: 1-tedesco, 1-normale
- ⊖<sub>GF</sub> Ground-fault double  
Presa: 1-tedesco, 1-normale  
DI SICUREZZA
- ⊖ Floor double  
Presa: 1-tedesco, 1-normale  
AL PAVIMENTO
- ⊖<sub>WP</sub> Waterproof double  
Presa: 1-tedesco, 1-normale  
STAGNO
- ⊖ Quad  
Presa: 2-tedesco, 2-normale
- ⊖<sub>GF</sub> Quad ground-fault  
Presa: 2-tedesco, 2-normale  
DI SICUREZZA
- ⊖<sub>A/C</sub> A/C
- ⊖<sub>LV?</sub> Low voltage, maybe?
- W Washer  
Lavatrice
- D Dryer  
Asciugatrice
- O Oven  
Forno
- WH Water heater  
Caldaia
- R Refrigerator  
Frigo
- DW Dishwasher  
Lavastoviglie
- GD Garbage disposal

## Lighting

Luce

- ⊖ CL Ceiling light  
May be flush or hanging  
Luce a pendente o al soffitto
- ⊖ CF/L Ceiling fan and light  
Ventilatore con luce
- ⊖ HL Hanging light  
Luce pendente
- ⊖ WM Wall mount light  
Luce applique
- ⊖ EWM Exterior wall mount light  
Luce esterna al muro (applique)
- ⊖ S Stair light in wall  
Farretti incassati scale
- ⊖ SL/MS Security light with motion detector  
Luce di sicurezza a sensore-movimento
- ⊖ UC Under cabinet low voltage  
Luce sotto pensili bassa tensione
- ⊖ Cable lights
- ⊖ DL Low-mounted down light

## Special

Altro

- EF Exhaust fan  
Estrazione
- SD Smoke detector  
Rilevatore fumo (NON a batteria)
- DP Data port (Network outlet (RJ-45))
- TV Television cable outlet  
Punto TV
- IRR Irrigation system controller  
Centralina irrigazione - va nella lavanderia
- Network Hardware (EJK to supply)
- R/M Modem/Router  
Modem/Router
- AP Wired access point

# Notes

21 June 2107

See special network map and explanation for details of 1, 2A, 2B, and 2C

- ① Connection to internet receiver on roof into office as shown
- ②A Wired connection from router to access point (ground floor, main room - CAT6)
- ②B **Wired connection from router to access point (ground floor, master bedroom - CAT6)**
- ②C Wired connection from router to access point (first floor - CAT6)
- ③ Wired for fan and light
- ④ Available connections for landscape lighting and switches that control them
- ⑤ Available connections for irrigation system. Likely underground
- ⑥ 3-way switch - ground and first floor. Stair lights, hanging light on landing, ceiling light on first floor
- ⑦ Low on wall of terrace
- ⑧ Icemaker also needs water supply and drain
- ⑨ With availability to connect pump for water trough
- ⑩ Motion light connection to kitchen switch

**NEW  
NOTE**

# Network Diagram

(based on Fidoka)



June 21, 2017



1



Combo modem and router

-  CAT6 - Hardwired by contractor
-  CAT6 - Cable with RJ-45 plugs

Switch



2C

2B

2A



First floor access point



Master BR access point



Main room access point

